

NEW JERSEY SYMPHONY

CELEBRATING
MUSIC DIRECTOR
XIAN ZHANG'S
TH SEASON!

10

25|26
SEASON



Escape THE everyday

The orchestra tunes, the conductor walks out to the podium, and suspenseful silence falls over the hall before beautiful sounds begin to resonate. These are the experiences and emotions you don't get from a recording. The sound of a live orchestra just can't be replicated digitally. First-time audience members who hear that rich sound from the strings, the warm tones of the brass, and the lilting melodies from the winds are often hooked for life. Whether it's the power of a chorus singing Mozart's Requiem or the "Hallelujah Chorus," the thrilling experience of a guest artist performing at the highest level, or the orchestra displaying its own stunning virtuosity, classical music is your escape from the everyday, allowing you to take a moment to relax, reflect, recharge ... or just enjoy.

Put live music on your calendar. Subscribe to a venue series or compose your own series of concerts. **Save up to 20% and get the best seats.** Easy exchanges and a money-back guarantee make it an easy choice.

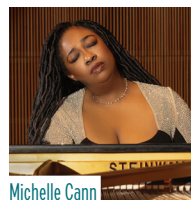
Electrifying guest artists!



Randall Goosby



Eva Gevorgyan



Michelle Cann



Francesca Dego



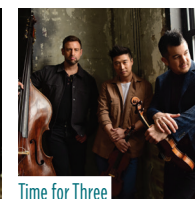
Joyce Yang



Emanuel Ax



Haochen Zhang



Time for Three

Magnificent masterworks

Samuel Barber Violin Concerto
Béla Bartók Concerto for Orchestra
Ludwig van Beethoven Symphony No. 5
Ludwig van Beethoven Symphony No. 6, "Pastoral"
Hector Berlioz *Symphonie fantastique*
Frédéric Chopin Piano Concerto No. 2
Antonín Dvořák Symphony No. 8
George Gershwin *Rhapsody in Blue*
Felix Mendelssohn Symphony No. 4, "Italian"
Wolfgang Amadeus Mozart Requiem
Florence Price Piano Concerto in One Movement
Sergei Prokofiev Violin Concerto No. 2
Richard Strauss *Ein Heldenleben*
Pyotr Ilyich Tchaikovsky Piano Concerto No. 1

New experiences & rare gems

Aaron Copland Suite from *Billy the Kid*
Allison Loggins-Hull New Work
 (World Premiere, New Jersey Symphony Commission)
Jessie Montgomery *Hymn for Everyone*
Gustav Mahler *Songs of a Wayfarer*
Wolfgang Amadeus Mozart Piano Concerto No. 22
Romeo & Juliet with Shakespeare Theatre of New Jersey
Kevin Puts *Contact*
Carlos Simon *Zodiac*
 (New Jersey Symphony Co-Commission)
Pyotr Ilyich Tchaikovsky Symphony No. 2, "Ukrainian"

A night out

TwoSet Violin with New Jersey Symphony
Fantasia in Concert
Elf in Concert
Handel's Messiah
Lunar New Year Celebration
Star Wars: The Last Jedi in Concert
Joshua Bell with New Jersey Symphony
Ben Folds with New Jersey Symphony





XIAN ZHANG

CELEBRATING MUSIC DIRECTOR XIAN ZHANG'S 10TH SEASON!

Dear Friends,

The 2025–26 season will be one to remember!

Throughout my 10th season with the Symphony, I am excited to share with you some of the most cherished pieces in classical music, alongside new works and new experiences that will inspire and delight. The season opens in October with Tchaikovsky's Piano Concerto No. 1, performed by the phenomenal Joyce Yang; Dvořák's Symphony No. 8; and Jessie Montgomery's *Hymn for Everyone*—this is indeed music for everyone!

In January, audience favorite Randall Goosby returns to perform Barber's Violin Concerto, one of the jewels of the violin repertoire. The Symphony will partner with The Shakespeare Theatre of New Jersey in a program that tells the story of *Romeo & Juliet* by combining powerful music by Prokofiev and Tchaikovsky with selected scenes from Shakespeare's beloved play.

In February and March, it's Beethoven, Bartók, and more Beethoven! We will perform Beethoven's Fifth and Sixth symphonies—written at the same time but very different in character—as well as Bartók's Concerto for Orchestra, which is a virtuosic showcase of the Symphony musicians. In April, I look forward to Mozart's Requiem, with a cast of dazzling soloists and the powerful and refined voices of the Montclair State University Chorale. I will also lead the orchestra in *Ein Heldenleben*—one of Richard Strauss' most expansive tone poems.

In May, Joshua Bell will perform his first concert as the Symphony's principal guest conductor, and will lead the orchestra both with and without the violin in hand. June brings a fantastic season finale—Berlioz's *Symphonie fantastique*, paired with Mozart's Piano Concerto No. 22, performed by the incredible Emanuel Ax. I will also conduct the world premiere of a new work by Allison Loggins-Hull, the New Jersey Symphony's Resident Artistic Partner.

Other stellar guest artists appearing on our stages this season include Michelle Cann performing Florence Price's Piano Concerto in One Movement and Gershwin's *Rhapsody in Blue*, Time for Three performing Kevin Puts' *Contact*, and the New Jersey Symphony debuts of pianist Eva Gevorgyan and violinist Francesca Dego.

Our 10th season together will be a season to remember!

Sincerely,

Xian Zhang
Music Director

The mission of New Jersey Symphony is to connect with the diverse communities of New Jersey through the power of live symphonic music to inspire, entertain, and educate.

Through adventurous performances, hands-on educational experiences, and robust community programming, we want everyone to enjoy the power and creativity of orchestral music in all its forms. Across genres and venues, for audiences of all walks of life, we strive to bring music that's meaningful to you, to you.

In our second century of music-making, we are renewing our deeply rooted commitment to amplifying the work of unique and vibrant communities by championing both new and local artists; engaging audiences for whom the inspiring depth and breadth of classical music will be new; and incorporating the broadest possible representation in all aspects of our organization—all to better reflect and serve our vibrant communities.

Our expansive educational offerings—including our youth orchestra which is celebrating its 35th season, masterclasses, and school residencies—will build the next generation of listeners and musicians and help students grow, both musically and personally. We will continue to seek new ways to connect with all New Jerseyans, through programs that resonate with a variety of cultural and musical backgrounds and by creating accessibility to audiences of all abilities.

New Jersey Symphony is here for you!

Connecting Through MUSIC



NEW JERSEY SYMPHONY

Classical

Season Opening Celebration



JOYCE YANG

Celebrate Xian's 10th anniversary with us!

We'll start the season off with a party you won't soon forget.

For more details visit

→ njsymphony.org/opening



XIAN ZHANG

Tchaikovsky's Piano Concerto No. 1

Xian Zhang conductor
Joyce Yang piano

Newark → Friday, Oct 10, 7:30 pm
Red Bank → Saturday, Oct 11, 7:30 pm
Newark → Sunday, Oct 12, 2 pm

Jessie Montgomery *Hymn for Everyone*

We launch the season with Montgomery's open-arms musical welcome. In her *Hymn for Everyone* you'll hear an echo of "Lift Every Voice and Sing," often called the Black National Anthem.

Pyotr Ilyich Tchaikovsky *Piano Concerto No. 1*

Slammed as a flop at its premiere, Tchaikovsky more than had the last laugh: here's jaw-dropping virtuosity for the soloist, sweeping melodies for the orchestra, and an audience favorite around the world.

Antonin Dvořák *Symphony No. 8*

Dvořák's pen might as well have been a paint brush. In his tuneful Eighth you can practically see autumn's most vivid colors and the heart-melting glow of an October sunset.

XIAN ZHANG

Rhapsody in Blue

Plus works by Florence Price & Carlos Simon

Tito Muñoz conductor
Michelle Cann piano

Newark → Thursday, Nov 6, 1:30 pm
Princeton → Friday, Nov 7, 7:30 pm
Newark → Saturday, Nov 8, 7:30 pm
New Brunswick → Sunday, Nov 9, 2 pm

Florence Price *Piano Concerto in One Movement*

An American genius, Florence Price mixes luscious lyricism with ragtime stomp. This recently unearthed gem won Cann—the leading interpreter of Price's piano music—a 2023 GRAMMY.

George Gershwin *Rhapsody in Blue*

United Airlines knows a good tune when it hears one, and that melody is the heartbeat of Gershwin's classic. But not before the famous swooping clarinet solo gets this piece of the Roaring Twenties underway.

Carlos Simon *Zodiac* (New Jersey Symphony Co-Commission; Northeast Premiere)

Carlos Simon is one of America's leading contemporary composers, and in his latest music, a proud co-commission of the New Jersey Symphony, Simon gives voice to all 12 zodiac signs—the music at turns fiery, ethereal, and soaring.

Aaron Copland *Suite from Billy the Kid*

Cowboy songs, folk tunes, and a visionary composer—all the ingredients that made Copland's wild-west ballet a hit in the '30s and a favorite still.



TITO MUÑOZ



MICHELLE CANN

GERSHWIN & COPLAND



XIAN
ZHANG
MUSIC
DIRECTOR

RANDALL
GOOSBY
VIOLIN

Randall Goosby Returns

Xian Zhang conductor
Randall Goosby violin

New Brunswick → Thursday, Jan 8, 7 pm

Princeton → Friday, Jan 9, 7:30 pm

Newark → Saturday, Jan 10, 7:30 pm

Morristown → Sunday, Jan 11, 2 pm

Jean Sibelius *Finlandia*

Eight minutes that saved a nation. When Finland wrestled itself free from the Russian bear, Sibelius' music was the Finns' call to courage.

Samuel Barber *Violin Concerto*

The most gorgeous violin concerto of the 20th century: the first two movements exquisitely touching, and the third a wild sprint for only the bravest of soloists.

Pyotr Ilyich Tchaikovsky *Symphony No. 2, "Ukrainian"*

Three Ukrainian folksongs were all Tchaikovsky needed for inspiration. From them, he spun his most joyful symphony.



RANDALL GOOSBY

RANDALL
GOOSBY

ROMEO & JULIET

Romeo & Juliet

Featuring The Shakespeare Theatre of New Jersey

Xian Zhang conductor
The Shakespeare Theatre of New Jersey guest artists

Newark → Thursday, Jan 29, 1:30 pm

Newark → Friday, Jan 30, 7:30 pm

Red Bank → Saturday, Jan 31, 7:30 pm

Newark → Sunday, Feb 1, 2 pm

Pyotr Ilyich Tchaikovsky *Romeo and Juliet Fantasy Overture*

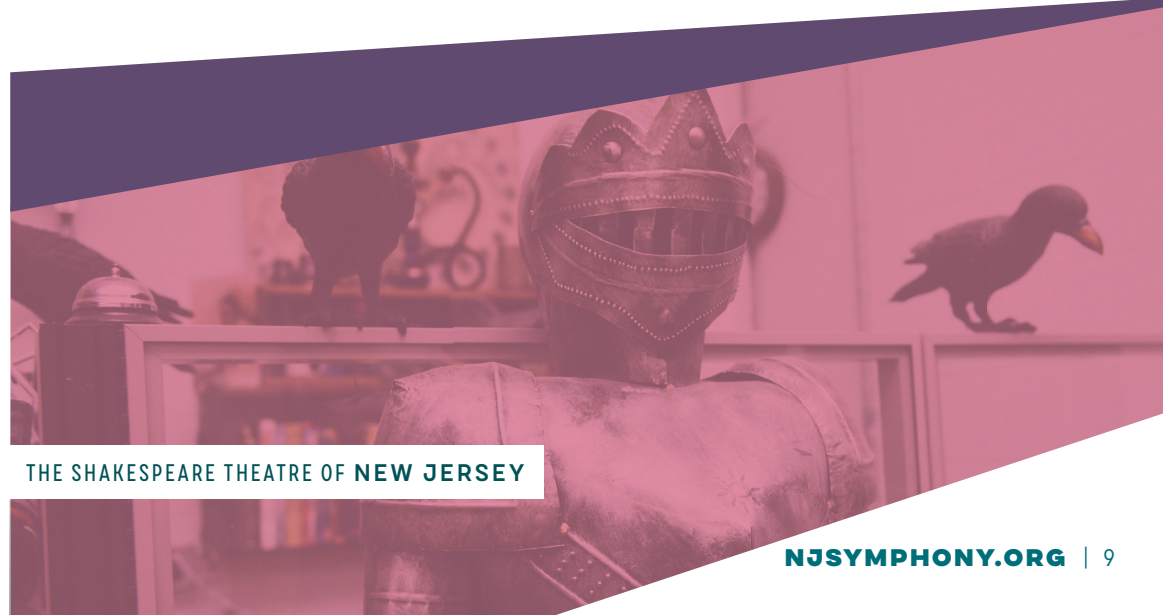
Tchaikovsky gives you all the passion and drama of Shakespeare's two young lovers, as the New Jersey Symphony becomes a storyteller in real time.

Sergei Prokofiev *Selections from Romeo and Juliet*

Considered too difficult, even undanceable at its unveiling, Prokofiev's ballet with scene after scene of strikingly original music soon became the treasure of every ballet house the world over.

PROGRAM DETAILS & MUSIC CLIPS

→ njsymphony.org



THE SHAKESPEARE THEATRE OF NEW JERSEY



TIME FOR THREE



MARKUS STENZ

Beethoven's Fifth Symphony

Time for Three Performs *Contact*

Markus Stenz conductor

Time for Three

Ranaan Meyer double bass

Nick Kendall violin

Charles Yang violin

Morristown → Thursday, Feb 26, 7 pm

Newark → Friday, Feb 27, 7:30pm

Newark → Sunday, Mar 1, 2 pm

Richard Wagner *Prelude to Act I of Lohengrin*

It begins with the strings alone playing a whisper-quiet passage of holy serenity. Soon the whole orchestra joins and builds in a full-throated cry. Wagner's operatic stage is set for the arrival of the knight Lohengrin sent on a mission from God.

Kevin Puts *Contact*

Time for Three, a self-described "classically trained garage band," brings you the GRAMMY Award-winning concerto written for them by Pulitzer Prize-winning composer Kevin Puts. Created during the isolation of the early pandemic, *Contact* is "an expression of yearning for the fundamental need" of human connection.

Ludwig van Beethoven *Symphony No. 5*

Four notes—dah, dah, dah, DAH—launched Beethoven's Fifth in 1808 and have stamped all of western classical music since.

BARTÓK & CHOPIN



RUTH REINHARDT



EVA GEVORGYAN

Bartók's Concerto for Orchestra

Ruth Reinhardt conductor

Eva Gevorgyan piano

Newark → Thursday, Mar 12, 1:30 pm

Princeton → Friday, Mar 13, 7:30 pm

Red Bank → Saturday, Mar 14, 7:30 pm

New Brunswick → Sunday, Mar 15, 2 pm

Béla Bartók *Romanian Folk Dances*

Informed by his numerous research trips across Hungary, this short and spry set of folk dances bursts with Transylvanian flavor and energy.

Frédéric Chopin *Piano Concerto No. 2*

There are moments here that make time, and your breath, stand still. If ever you need evidence of the human spirit's capacity for beauty, look to this remarkable creation of 20-year-old Chopin.

Béla Bartók *Concerto for Orchestra*

Every section of the orchestra gets the spotlight to dazzling effect, and the Concerto's last moments are some of the most thrilling in all classical music.

PROGRAM DETAILS
& MUSIC CLIPS

→ njsymphony.org

BEEHOVEN'S FIFTH



JUAN ESTEBAN MARTINEZ

Beethoven's "Pastoral" Symphony

Xian Zhang conductor
Juan Esteban Martinez clarinet

Newark → Friday, Mar 27, 7:30 pm
Newark → Saturday, Mar 28, 7:30 pm
Morristown → Sunday, Mar 29, 2 pm

Wolfgang Amadeus Mozart Divertimento in D Major, K. 136

The spotlight opens on the New Jersey Symphony's virtuoso strings playing the sunniest music Mozart ever created.

Wolfgang Amadeus Mozart Clarinet Concerto

Principal Clarinet Juan Esteban Martinez will shine in this sunny crown jewel of the clarinet repertoire, which was written for an earlier iteration of the modern clarinet.

Ludwig van Beethoven Symphony No. 6, "Pastoral"

His greatest inspiration came from long walks in nature, score paper, and pencil stuffed in his pocket. Beethoven takes us with him in his Sixth, his music full of open-air melodies, and the drama of a ferocious storm.

BEETHOVEN'S SIXTH



NEW JERSEY SYMPHONY



XIAN ZHANG

Xian Conducts Prokofiev & Strauss

Xian Zhang conductor
Francesca DeGo violin

Newark → Friday, Apr 10, 7:30 pm
Red Bank → Saturday, Apr 11, 7:30 pm
Newark → Sunday, Apr 12, 2 pm

Anton Webern *Im Sommerwind*

A lovingly lush hymn to the charms of summer, written just before Webern helped stand traditional classical music on its head.

Sergei Prokofiev Violin Concerto No. 2

It opens with a wisp of melancholy Russian folksong and closes with castanets and Spanish flair, creating fireworks for a world-class violinist and orchestra.

Richard Strauss *Ein Heldenleben*

Orchestras love this ode to "A Hero's Life" for its bold, voluptuous sweep, created by Strauss as a musical pat on his own back.



FRANCESCA DEGO

STRAUSS' EIN HELDENLEBEN



MONTCLAIR STATE UNIVERSITY CHORALE

Mozart's Requiem

Xian Zhang conductor
Mei Gui Zhang soprano
Taylor Raven mezzo-soprano
Eric Ferring tenor
Dashon Burton bass-baritone
Montclair State University Chorale |
Heather J. Buchanan, director

Newark → Thursday, Apr 16, 1:30 pm
Newark → Saturday, Apr 18, 7:30 pm
New Brunswick → Sunday, Apr 19, 2 pm

Gabriel Fauré Pavane

A slowly winding melody that started as a simple little five-minute piano solo. But when Fauré orchestrated his Pavane and added the rich sound of a chorus, he made magic and his greatest hit.

Gustav Mahler *Songs of a Wayfarer*

Come enjoy one of the finest voices in America: bass-baritone Dashon Burton sings the suite of beautiful songs Mahler wrote as he took solace in nature after being spurned in love.

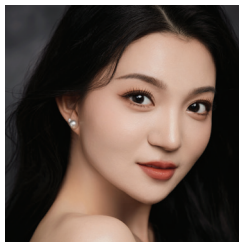
Wolfgang Amadeus Mozart Requiem

A swansong full of fire, grace, and a transcendent prayer that the human spirit will live on. Mozart's Requiem was left maddeningly incomplete at his all-too-early death, but is nevertheless his final masterpiece.

The April 18 performance is presented in collaboration with New Jersey Performing Arts Center.



XIAN ZHANG



MEI GUI ZHANG



ERIC FERRING



TAYLOR RAVEN



DASHON BURTON

PROGRAM DETAILS
& MUSIC CLIPS
→ njsymphony.org

JOSHUA BELL

Principal Guest Conductor

Joshua Bell Leads Mendelssohn's "Italian"

Joshua Bell conductor & violin

Newark → Thursday, May 14, 1:30 pm

Princeton → Friday, May 15, 7:30 pm

Newark → Saturday, May 16, 7:30 pm

Morristown → Sunday, May 17, 2 pm

Felix Mendelssohn *The Hebrides (Fingal's Cave)*

The music swells and surges just as the waves off Scotland's coast carried the young Mendelssohn past moody cliffs and caves and sent him reaching for his score paper.

Édouard Lalo *Symphonie espagnole*

Though called a "symphony," this is where superstar Joshua Bell stands and lets his Stradivarius violin sing the silvery songs of Spain.

Felix Mendelssohn Symphony No. 4, "Italian"

"The jolliest piece I've ever done," wrote an ecstatic young Mendelssohn to his parents back in Berlin, after arriving in Italy and falling in love with its sunshine, sidewalk tunes, coast, and effervescent colors—all of which he poured into his Fourth Symphony.

The May 16 performance is presented in collaboration with New Jersey Performing Arts Center.



JOSHUA BELL
Principal Guest Conductor

Season

FINALE



EMANUEL AX

Symphonie fantastique

Xian Zhang conductor
Emanuel Ax piano

New Brunswick → Thursday, June 4, 7 pm
Princeton → Friday, June 5, 7:30 pm
Red Bank → Saturday, June 6, 7:30 pm
Newark → Sunday, June 7, 2 pm

Allison Loggins-Hull New Work

(World Premiere; New Jersey Symphony Commission)

You may have seen her performing with Lizzo at the GRAMMYS, or heard her on the soundtrack to *The Lion King*, or loved her *Can You See?* performed by the New Jersey Symphony last fall. Be the first to hear our Resident Artistic Partner's latest creation.

Wolfgang Amadeus Mozart Piano Concerto No. 22

Mozart in his late 20s took a tune he wrote when he was eight and turned it into this half-hour masterpiece, the second of its three movements so moving that its first audience demanded a repeat.

Hector Berlioz *Symphonie fantastique*

Smitten with unrequited love, Berlioz funneled all his frustrations and utter mind-blowing genius into a whirlwind of orchestral color.

EMANUEL
AX

Family Concerts

Discover *Rhapsody in Blue*

New Jersey Symphony Family Concert

Tito Muñoz conductor
Michelle Cann piano

Newark → Saturday, Nov 8, 2 pm

George Gershwin *Rhapsody in Blue*
Aaron Copland *Suite from Billy the Kid*

Discover what makes a live orchestra concert so special. We'll take a deep dive into one of the greatest American piano concertos, Gershwin's *Rhapsody in Blue*, followed by Copland's lively *Suite from Billy the Kid*.

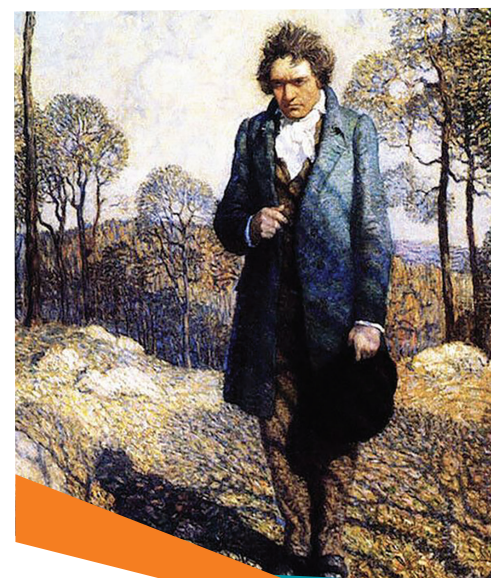
YOUTH TICKETS \$10
ADULT TICKETS \$20
→ njsymphony.org



TITO MUÑOZ



MICHELLE CANN



Discover Beethoven's "Pastoral" Symphony

New Jersey Symphony Family Concert

Xian Zhang conductor

Newark → Saturday, Mar 28, 2 pm

Ludwig van Beethoven *Symphony No. 6, "Pastoral"*

Discover the storytelling power of classical music! Beethoven's "Pastoral" Symphony was one of his only works that depicts very specific scenes and storylines, which we'll dive into measure by measure in this concert.

Inspired by Leonard Bernstein's masterful way of putting young audiences at the center of music-making, this interactive concert will feature inside tips, listening cues, and fun facts that make for the perfect Saturday afternoon family outing!

An Instrument Discovery Zone will take place before each concert.

Films LIVE WITH Orchestra

Disney FANTASIA



Fantasia in Concert

New Jersey Symphony at the Movies

Constantine Kitsopoulos conductor

Morristown → Thursday, Oct 23, 7 pm

Red Bank → Saturday, Oct 25, 2 pm

New Brunswick → Sunday, Oct 26, 2 pm

Experience Disney's groundbreaking marriage of symphonic music and animation, *Fantasia*. Beloved repertoire from the original 1940 version and *Fantasia 2000*, including *The Sorcerer's Apprentice*, Beethoven's Fifth Symphony, and *The Nutcracker Suite*, will be performed by the New Jersey Symphony while Disney's stunning footage is shown on the big screen. Enjoy iconic moments and childhood favorites like never before!

October 26 performance presented in collaboration with State Theatre New Jersey.



Presentation Licensed by
Disney© Concerts

STAR WARS THE LAST JEDI



Star Wars: *The Last Jedi* in Concert

New Jersey Symphony at the Movies

Constantine Kitsopoulos conductor

Red Bank → Friday, May 29, 7:30 pm

Newark → Saturday, May 30, 7:30 pm

New Brunswick → Sunday, May 31, 2 pm



© 2017 & TM Lucasfilm Ltd.
Presentation licensed by Disney Concerts in association
with 20th Century Fox Film Corp, Lucasfilm and
Warner/Chappell Music. © All rights reserved.

Don't miss this big-screen battle with the score performed live by the New Jersey Symphony. The Resistance is in desperate need of help when they find themselves impossibly pursued by the First Order. While Rey travels to a remote planet called Ahch-To to recruit Luke Skywalker to the Resistance, Finn and Rose, a mechanic, go on their own mission in the hopes of helping the Resistance finally escape the First Order. But everyone finds themselves on the salt-planet of Crait for a last stand.

May 31 performance presented in collaboration with State Theatre New Jersey.

Holidays and Celebrations



Elf in Concert

New Jersey Symphony at the Movies

Conner Gray Covington conductor

Newark → Saturday, Dec 6, 2 pm

Red Bank → Sunday, Dec 7, 2 pm

Rated PG. ELF and all related characters and elements
© & ™ New Line Productions, Inc.

BROUGHT TO YOU BY CINECONCERTS

Buddy was accidentally transported to the North Pole as a toddler and raised to adulthood among Santa's elves. Unable to shake the feeling that he doesn't fit in, the adult Buddy travels to New York, in full elf uniform, in search of his real father. This holiday season, relive this heartwarming holiday classic on a giant screen as every note of John Debney's wonderful score is played live to picture in: *Elf™* in Concert!

Handel's *Messiah*

Anthony Parnter conductor
Caitlin Gotimer soprano
Maria Dominique Lopez mezzo-soprano
Orson Van Gay II tenor
Shyheim Selvan Hinnant bass-baritone
Montclair University Singers |
Heather J. Buchanan, director

Princeton → Friday, Dec 19, 7:30 pm

Princeton → Saturday, Dec 20, 7:30 pm

Newark → Sunday, Dec 21, 7 pm
(Cathedral Basilica of the Sacred Heart)

George Frideric Handel *Messiah*

Handel's *Messiah* embraces every emotion, from the first voice singing "Comfort ye," inviting you to step aside from the season's frenzy, to the riveting Amen Chorus at the end. In between are moments of transcendence, loss, and deeply-felt awe—what makes a classic a classic.

HOLIDAY SINGALONG

Princeton → Friday, December 19 at 6:30 pm

Enjoy a festive singalong of holiday songs and carols.

2026 Lunar New Year Celebration Concert

Year of the Horse

Sunny Xia conductor
Haochen Zhang piano
Peking University Alumni Chorus

Newark → Saturday, Feb 7, 7:30 pm

Enjoy an evening of community and cultural exchange that is wonderful for families and children, as we celebrate the Year of the Horse. Seattle Symphony Associate Conductor Sunny Xia and Van Cliburn International Piano Competition Winner Haochen Zhang make their New Jersey Symphony debuts in this festive concert that celebrates music from East and West.

ADD THIS CONCERT TO YOUR CLASSICAL
SERIES AND SAVE!

→ 1.800.ALLEGRO (255.3476)



Special guests



TWOSET VIOLIN

TwoSet Violin with New Jersey Symphony

Newark → Sunday, Oct 5, 2 pm

World-famous YouTube classical music comedy duo TwoSet Violin take the stage with the New Jersey Symphony for a wide-ranging night of musical fun! Violinists Eddy Chen and Brett Yang will take their unique brand of earnest and silly musical comedy to a new level in this performance, with the backing of a full symphony orchestra.

One night only!

TWOSET
VIOLIN

BEN FOLDS



BEN FOLDS

Ben Folds with the New Jersey Symphony

Newark → Saturday, June 13, 7:30 pm
New Brunswick → Sunday, June 14, 2 pm

Emmy-nominated singer-songwriter-composer Ben Folds joins the New Jersey Symphony for a unique and unforgettable performance of music from across his career. Widely regarded as one of the major musical influences of our generation, Folds’ enormous body of genrebending music includes pop albums with Ben Folds Five, multiple solo albums, and numerous collaborative records. His latest album, 2023’s *What Matters Most*, is a blend of piano-driven pop rock songs, while his 2015 Concerto for Piano and Orchestra soared to #1 on both the Billboard classical and classical crossover charts. He released his first Christmas album in 2024 and last Fall recorded a live album slated for release in 2025 with the National Symphony Orchestra (NSO) at The Kennedy Center in Washington, D.C., where he served for eight years as the first artistic advisor to the NSO.

June 14 performance presented in collaboration with State Theatre New Jersey.

Compose Your Own Series!

Select ***four or more*** of your favorite concerts and save!



XIAN ZHANG

- **SAVE UP TO 20%** on single ticket prices!
- **MIX AND MATCH** venues, days of week, seating locations ... the choice is yours.
- **INCREDIBLE FLEXIBILITY** with easy exchanges and a money-back guarantee.



TIME FOR THREE



EMANUEL AX

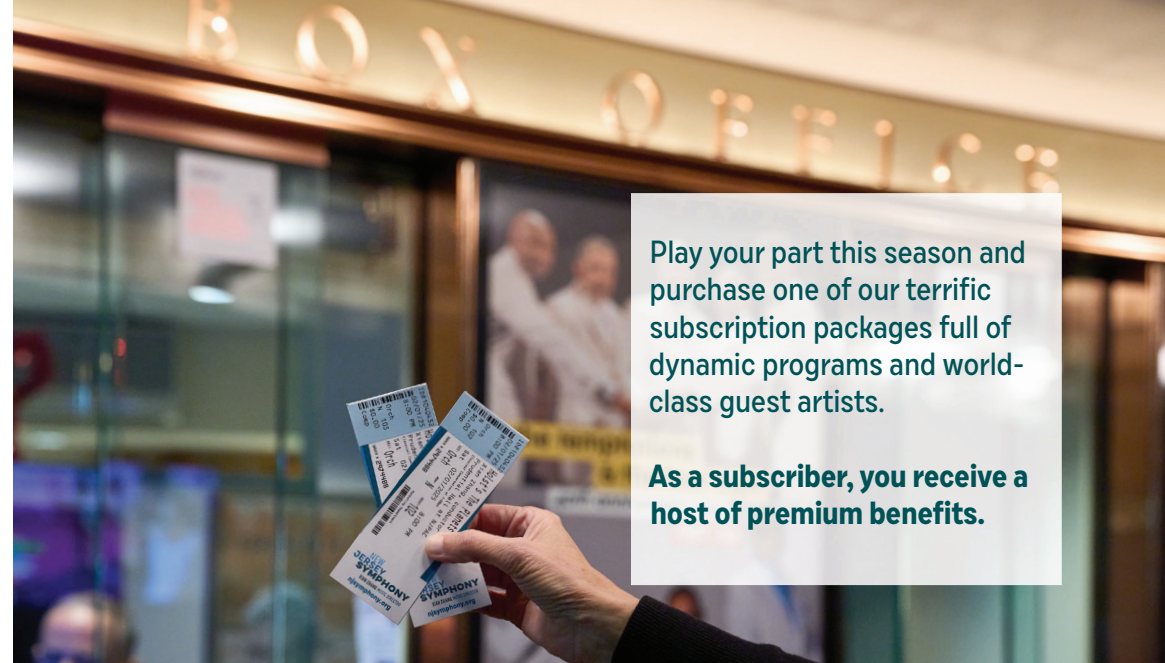


JOSHUA BELL



RANDALL GOOSBY

njsymphony.org/cyo



Play your part this season and purchase one of our terrific subscription packages full of dynamic programs and world-class guest artists.

As a subscriber, you receive a host of premium benefits.

2025|26 Subscription Series

Subscribe today!

Online at njsymphony.org/subscribe

- **Select** your preferred venue and series, from five venue locations.
- **Review** the concerts and dates in your package and click the “Buy Series” button. If you can’t make a concert in your package, the New Jersey Symphony offers free and flexible exchanges for subscribers.
- **Choose** your seating section and price level. Seating charts are available at njsymphony.org/venues.

Call Patron Services at 1.800.ALLERGO (255.3476)

Receive personalized service and discuss venue, series, and seating options with a friendly Patron Services representative. We’re here to help you Monday to Friday from 10 am to 5 pm, and concert Saturdays from 11 am to 5 pm.



Bus transportation

Leave the driving to us! Bus transportation is available for select series for \$14 per concert. A minimum of 25 reservations per route are required to guarantee service. Please contact **1.800.ALLEGRO (255.3476)** to learn more.

njsymphony.org/subscribe

The New Jersey Symphony is ADA compliant. For our patrons with special needs, we offer wheelchair-accessible seating and facilities, large-print programs, and assisted listening devices. Not all services are available in all locations. Please contact us for more information.



Subscribe & Save!

Receive these great benefits
with your subscription package
to any of our venues!

	Venue series subscribers	Create your own series subscribers	Single ticket purchasers
Money-back guarantee Love it, or get your money back!	+		
Same seats Enjoy the same great seats for every concert.	+		
Free bonus voucher for renewing subscribers Renew by April 30 for a bonus voucher to add an additional concert.	+		
Buy more, save more Save 10%-30% on additional concerts.*	+		
Save money! A 10-20% discount compared to buying single tickets.	+	+	
Lock-in your price Receive consistent pricing all season long. Avoid future price increases.*	+	+	
Most fees waived Unlimited no-fee exchanges and no charge for ticket reprints/missing tickets.	+	+	
Date and venue flexibility Select your own dates across five venues.		+	+

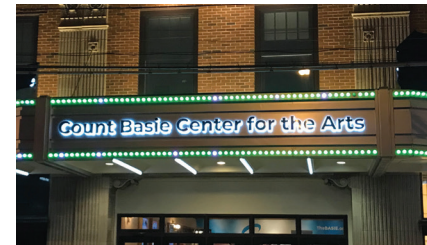
*Based on subscriber tenure. More info: njsymphony.org/subscriberbenefits.
Not valid on premium concerts and fundraising events.

njsymphony.org/subscribe

Count Basie Center for the Arts in Red Bank



SEATING MAP



Count Basie Center for the Arts
99 Monmouth Street, Red Bank, NJ 07701

A historic theater with modern amenities adds majesty to the music, with a lively downtown and great restaurants.

Red Bank series:
Saturday evenings at 7:30 pm

Five concerts

P \$520; A \$380; B \$260; C \$180, D \$115

Season Opening: Tchaikovsky's Piano Concerto No. 1

Saturday, October 11, 7:30 pm (see page 6)

Romeo & Juliet

Saturday, January 31, 7:30 pm (see page 9)

Bartók's Concerto for Orchestra

Saturday, March 14, 7:30 pm (see page 11)

Xian Conducts Prokofiev & Strauss

Saturday, April 11, 7:30 pm (see page 13)

Season Finale: *Symphonie fantastique*

Saturday, June 6, 7:30 pm (see page 16)

→ Add specials

Fantasia in Concert

Saturday, Oct 25, 2 pm (see page 18)

P \$99; A \$79; B \$69; C \$59; D \$39; E \$29

Elfin Concert

Sunday, Dec 7, 2 pm (see page 20)

P \$119; A \$99; B \$79; C \$59; D \$39

Star Wars: The Last Jedi in Concert

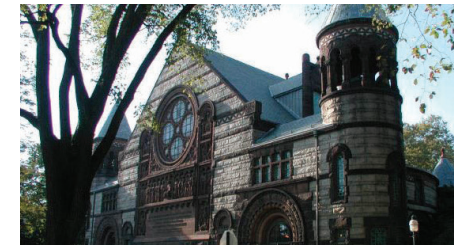
Friday, May 29, 7:30 pm (see page 19)

P \$110; A \$89; B \$75; C \$59; D \$45; E \$35

Richardson Auditorium in Princeton



SEATING MAP



Richardson Auditorium
61 Nassau Street, Princeton, NJ 08542

The music envelops you in this intimate space, located on the Princeton University campus, directly across from downtown Princeton's Palmer Square.

Princeton series:
Friday evenings at 7:30 pm

Five concerts

P \$520; A \$395; B \$235; D \$115

Rhapsody in Blue

Friday, November 7, 7:30 pm (see page 7)

Randall Goosby Returns

Friday, January 9, 7:30 pm (see page 8)

Bartók's Concerto for Orchestra

Friday, March 13, 7:30 pm (see page 11)

Joshua Bell Leads Mendelssohn's "Italian"

Friday, May 15, 7:30 pm (see page 15)

Season Finale: *Symphonie fantastique*

Friday, June 5, 7:30 pm (see page 16)

→ Add specials

Handel's Messiah

Friday, Dec 19, 7:30 pm (see page 21)

Saturday, Dec 20, 7:30 pm (see page 21)

P \$115; A \$99; B \$59; C \$45; D \$29

New start times in Red Bank and Princeton!

→ 7:30 pm concert start time

1.800.ALLEGRO (255.3476)

Mayo Performing Arts Center in Morristown



SEATING MAP



Mayo Performing Arts Center
100 South Street, Morristown, NJ 07960

Fans attending performances at Mayo Performing Arts Center in Morristown can also enjoy the great variety of restaurants near the venue.

Morristown series 1: Sunday at 2 pm | Thursday at 7 pm

Four concerts

P \$416; A \$316; B \$220; C \$156; D \$92

Randall Goosby Returns

Sunday, January 11, 2 pm (see page 8)

Beethoven's Fifth Symphony

Thursday, February 26, 7 pm (see page 10)

Beethoven's "Pastoral" Symphony

Sunday, March 29, 2 pm (see page 12)

Joshua Bell Leads Mendelssohn's "Italian"

Sunday, May 17, 2 pm (see page 15)

Morristown series 2: Sunday at 2 pm

Three concerts

P \$312; A \$237; B \$165; C \$117; D \$69

Randall Goosby Returns

Sunday, January 11, 2 pm (see page 8)

Beethoven's "Pastoral" Symphony

Sunday, March 29, 2 pm (see page 12)

Joshua Bell Leads Mendelssohn's "Italian"

Sunday, May 17, 2 pm (see page 15)

→ Add specials

Fantasia in Concert

Thursday, Oct 23, 7 pm (see page 18)

P \$99; A \$79; B \$59; C \$39; D \$29

New start times!

→ Thursday evenings at 7 pm

→ Sunday matinees at 2 pm

State Theatre New Jersey in New Brunswick



SEATING MAP



State Theatre New Jersey
15 Livingston Avenue,
New Brunswick, NJ 08901

There's plenty to love at State Theatre New Jersey in New Brunswick, located in the heart of the New Brunswick arts district.

New Brunswick series 1: Sunday at 2 pm | Thursday at 7 pm

Five concerts

P \$520; A \$395; B \$275; C \$195; D \$115

Rhapsody in Blue

Sunday, November 9, 2 pm (see page 7)

Randall Goosby Returns

Thursday, January 8, 7 pm (see page 8)

Bartók's Concerto for Orchestra

Sunday, March 15, 2 pm (see page 11)

Mozart's Requiem

Sunday, April 19, 2 pm (see page 14)

Season Finale: *Symphonie fantastique*

Thursday, June 4, 7 pm (see page 16)

New Brunswick series 2: Sunday at 2 pm

Three concerts

P \$312; A \$237; B \$165; C \$117; D \$69

Rhapsody in Blue

Sunday, November 9, 2 pm (see page 7)

Bartók's Concerto for Orchestra

Sunday, March 15, 2 pm (see page 11)

Mozart's Requiem

Sunday, April 19, 2 pm (see page 14)

→ Add specials

Fantasia in Concert

Sunday, Oct 26, 2 pm (see page 18)

P \$99; A \$79; B \$69; C \$59; D \$39; E \$29

Star Wars: The Last Jedi in Concert

Sunday, May 31, 2 pm (see page 19)

P \$110; A \$89; B \$69; C \$59; D \$49; E \$35

Ben Folds with the New Jersey Symphony

Sunday, June 14, 2 pm (see page 23)

P \$109; A \$94; B \$79; C \$64; D \$49; E \$34

New start times!

→ Thursday evenings at 7 pm

→ Sunday matinees at 2 pm



SEATING MAP



New Jersey Performing Arts Center
One Center Street, Newark, NJ 07102

NJPAC in Newark really does have it all—a warm, inviting atmosphere, convenient on-site dining and parking options, spacious lobby areas, and superb acoustics for orchestral concerts.

NJPAC series 1:
Friday at 7:30 pm | Saturday at 7:30 pm

Nine concerts

P \$936; A \$684; B \$468; C \$324; D \$207

Season Opening: Tchaikovsky's Piano Concerto No. 1

Friday, October 10, 7:30 pm (see page 6)

Rhapsody in Blue

Saturday, November 8, 7:30 pm (see page 7)

Randall Goosby Returns

Saturday, January 10, 7:30 pm (see page 8)

Romeo & Juliet

Friday, January 30, 7:30 pm (see page 9)

Beethoven's Fifth Symphony

Friday, February 27, 7:30 pm (see page 10)

Beethoven's "Pastoral" Symphony

Friday, March 27, 7:30 pm (see page 12)

Xian Conducts Prokofiev & Strauss

Friday, April 10, 7:30 pm (see page 13)

Mozart's Requiem

Saturday, April 18, 7:30 pm (see page 14)

Joshua Bell Leads Mendelssohn's "Italian"

Saturday, May 16, 7:30 pm (see page 15)

NJPAC series 2:
Thursday at 1:30 pm | Sunday at 2 pm

Nine concerts

P \$936; A \$711; B \$495; C \$351; D \$207

Season Opening: Tchaikovsky's Piano Concerto No. 1

Sunday, October 12, 2 pm (see page 6)

Rhapsody in Blue

Thursday, November 6, 1:30 pm (see page 7)

Romeo & Juliet

Thursday, January 29, 1:30 pm (see page 9)

Beethoven's Fifth Symphony

Sunday, March 1, 2 pm (see page 10)

Bartók's Concerto for Orchestra

Thursday, March 12, 1:30 pm (see page 11)

Xian Conducts Prokofiev & Strauss

Sunday, April 12, 2 pm (see page 13)

Mozart's Requiem

Thursday, April 16, 1:30 pm (see page 14)

Joshua Bell Leads Mendelssohn's "Italian"

Thursday, May 14, 1:30 pm (see page 15)

Season Finale: Symphonie fantastique

Sunday, June 7, 2 pm (see page 16)

NJPAC series 3:
Thursday at 1:30 pm

Five concerts

P \$520; A \$395; B \$275; C \$195; D \$115

Rhapsody in Blue

Thursday, November 6, 1:30 pm (see page 7)

Romeo & Juliet

Thursday, January 29, 1:30 pm (see page 9)

Bartók's Concerto for Orchestra

Thursday, March 12, 1:30 pm (see page 11)

Mozart's Requiem

Thursday, April 16, 1:30 pm (see page 14)

Joshua Bell Leads Mendelssohn's "Italian"

Thursday, May 14, 1:30 pm (see page 15)

NJPAC series 4:
Friday at 7:30 pm

Five concerts

P \$520; A \$380; B \$260; C \$180; D \$115

Season Opening: Tchaikovsky's Piano Concerto No. 1

Friday, October 10, 7:30 pm (see page 6)

Romeo & Juliet

Friday, January 30, 7:30 pm (see page 9)

Beethoven's Fifth Symphony

Friday, February 27, 7:30 pm (see page 10)

Beethoven's "Pastoral" Symphony

Friday, March 27, 7:30 pm (see page 12)

Xian Conducts Prokofiev & Strauss

Friday, April 10, 7:30 pm (see page 13)

NJPAC series 5:
Saturday at 7:30 pm

Five concerts

P \$520; A \$380; B \$260; C \$180; D \$115

Rhapsody in Blue

Saturday, November 8, 7:30 pm (see page 7)

Randall Goosby Returns

Saturday, January 10, 7:30 pm (see page 8)

Beethoven's "Pastoral" Symphony

Saturday, March 28, 7:30 pm (see page 12)

Mozart's Requiem

Saturday, April 18, 7:30 pm (see page 14)

Joshua Bell Leads Mendelssohn's "Italian"

Saturday, May 16, 7:30 pm (see page 15)

NJPAC series 6:
Sunday at 2 pm

Five concerts

P \$520; A \$395; B \$275; C \$195; D \$115

Season Opening: Tchaikovsky's Piano Concerto No. 1

Sunday, October 12, 2 pm (see page 6)

Romeo & Juliet

Sunday, February 1, 2 pm (see page 9)

Beethoven's Fifth Symphony

Sunday, March 1, 2 pm (see page 10)

Xian Conducts Prokofiev & Strauss

Sunday, April 12, 2 pm (see page 13)

Season Finale: Symphonie fantastique

Sunday, June 7, 2 pm (see page 16)

→ **Add specials**

TwoSet Violin with the New Jersey Symphony

Sunday, Oct 5, 2 pm (see page 22)

P \$159; A \$139; B \$118; C \$89; D \$69; E \$49

Elf in Concert

Saturday, Dec 6, 2 pm (see page 20)

P \$119; A \$99; B \$79; C \$59; D \$39

Handel's Messiah

Sunday, Dec 21, 7 pm (Cathedral Basilica) (see page 21)

P \$110; A \$89; B \$69; C \$49; D \$25

Lunar New Year Celebration

Saturday, Feb 7, 7:30 pm (see page 21)

P \$89; A \$69; B \$49; C \$39; D \$29

Star Wars: The Last Jedi in Concert

Saturday, May 30, 7:30 pm (see page 19)

P \$110; A \$89; B \$69; C \$49; D \$35

Ben Folds with the New Jersey Symphony

Saturday, June 13, 7:30 pm (see page 23)

P \$109; A \$94; B \$79; C \$64; D \$49; E \$34

→ **Add family concerts**

Discover Rhapsody in Blue

Saturday, Nov 8, 2 pm (see page 17)

Discover Beethoven's Pastoral

Saturday, Mar 28, 2 pm (see page 17)

Youth \$10; Adults \$20

New start times!

→ Friday & Saturday evenings at 7:30 pm

→ Sunday matinees at 2 pm

→ Thursday matinees continue at 1:30 pm



NEW JERSEY SYMPHONY RESIDENT ORCHESTRA OF NJPAC

NEW JERSEY PERFORMING ARTS CENTER



CONNECT with us

**Stay engaged—
anywhere, anytime!**

Social media

Experience the Symphony from the comfort of your own home. Follow the excitement both on stage and off on our various social media channels. Enjoy concert films, digital performances, and more great content so you are never without the music you love.

Facebook @njsymphony

X @njsymphony

Instagram @njsymphony

TikTok @njsymphony

YouTube @newjerseysymphony

Email

Don't miss a beat. Sign up to receive emails reminding you of your concerts and sharing info about upcoming performances, Symphony news, and special offers.

Sign up njsymphony.org/signup

Website

Your central hub for all things New Jersey Symphony. Learn all about programs, musicians, artists, and community impact.

Visit njsymphony.org

**Experience the New Jersey
Symphony at any of these venues**

Morristown: Mayo Performing Arts Center

100 South Street, Morristown, NJ 07960

Newark: New Jersey Performing Arts Center

1 Center Street, Newark, NJ 07102

New Brunswick: State Theatre New Jersey

15 Livingston Avenue, New Brunswick, NJ 08901

Princeton: Richardson Auditorium

61 Nassau Street, Princeton, NJ 08542

Red Bank: Count Basie Center for the Arts

99 Monmouth Street, Red Bank, NJ 07701

Learn more about these venues online at njsymphony.org or by phone at 1.800.ALLEGRO (255.3476).

New Jersey Performing Arts Center and the New Jersey Symphony share a common goal: to ensure lasting connections between the people of New Jersey and the life-enhancing power of the performing arts.

Since its opening on October 18, 1997, NJPAC has served more than 12 million visitors, including more than 2 million students and families. The exceptional acoustics of its largest theater, Prudential Hall, are evident the moment an instrumentalist, a singer, or a symphony orchestra sounds the first note of any performance on the Betty Wold Johnson Stage. A typical season includes more than 1,100 events reflective of New Jersey's diverse audiences including concerts, dance performances, comedy shows, conversations, and other cultural experiences, both on and off the Arts Center's downtown Newark campus. Among the world-class performers who have appeared at NJPAC are Joshua Bell, Lang Lang, Alvin Ailey American Dance Theater, Bob Dylan, Jerry Seinfeld, Wayne Shorter, Diana Ross, the Gipsy Kings, Savion Glover, Tony Bennett, Sting, Aretha Franklin, and The Roots.

Many artists and critics have praised NJPAC's Prudential Hall for its beauty and extraordinary sound, among them former *The New York Times* music critic Hans Fantel (one of the "world's greatest concert halls") and arts critic Clive Barnes (the "nation's most glamorous theater").

njpac



Support your New Jersey Symphony

You make the music possible.

We are New Jersey's Symphony.

Under the bold leadership of Music Director Xian Zhang and fueled by the impeccable talent of world-class musicians, the New Jersey Symphony amplifies the transformative power of music across the state—uniting and inspiring audiences through music: from classical works to adventurous performances and inclusive lifelong education programs. With mainstage concerts, community chamber music performances, education programs, and innovative digital content, the Symphony brings the power of music to New Jerseyans anytime, anywhere.

The New Jersey Symphony depends on the generosity of donors to present, nurture, and celebrate symphonic music in our community and beyond. Donor support helps us achieve so much:

- Enrich the lives of over 300 students in New Jersey Symphony Youth Orchestra
- Present live orchestra Concerts for Young People to nearly 3,000 K-8 students and educators
- Bring Symphony musicians into communities, schools, religious centers, and healthcare facilities to perform for and connect with more than 18,000 people across the state
- Pilot of “Orchestrating Impact: Stories from the Heart of the New Jersey Symphony,” a podcast series produced in partnership with Newark’s ABF Creative that highlights the impact of music and diverse, local community connections

... and we're eager to continue building on that success this year.

Every contribution, large or small, directly supports our mission. Give today at njsymphony.com/support.



Scan to make a gift.

MAKE A GIFT. MAKE MUSIC HAPPEN.

Your gift to the New Jersey Symphony makes great music happen, in the hall and in your community.

Make a gift

Online
njsymphony.org/support

By phone
973.735.1723

By mail
Attention Development Department
60 Park Place, Suite 900
Newark, NJ 07102

Donor benefits
Learn more about donor benefits at
njsymphony.org/support

Thank you for supporting your New Jersey Symphony!

OUR SPONSORS!

NEW JERSEY SYMPHONY IS INCREDIBLY GRATEFUL FOR THE GENEROSITY OF

Bloomberg Philanthropies

Broadridge

Citizens

THE GENWEALTH GROUP
Maplewood, NJ

Hackensack Meridian Health

Investors Foundation

Johnson & Johnson

Lowenstein Sandler

M&T Bank

MERCK FOUNDATION

OCEAN COUNTY COLLEGE FOUNDATION

PNC FOUNDATION

Prudential

PSEG Foundation

CLA

Star-Ledger
AFFILIATED WITH nj.com

TD Charitable Foundation

verizon

Frank and Lydia Bergen Foundation • The Charles E. and Edna T. Brundage Foundation • Marjorie Bunnell Charitable Fund • CBS Radio • DHR Global
The Edward T. Cone Foundation • F.M. Kirby Foundation • Fox Rothschild • Franklin Mutual Insurance Company • EJ Grassmann Trust • John and Margaret Post Foundation • Richard H. Holzer Memorial Foundation • The Hyde and Watson Foundation • The Harold I. & Faye B. Liss Foundation • The MCJ Amelior Foundation • McCarter & English • NJM Insurance Group • The Philip W. Riskin Charitable Foundation • Turrell Fund • The Union Foundation • The Lucy and Eleanor S. Upton Foundation • Victoria Foundation • WNYC • WQXR

Photo Credits: Front cover, back cover, p. 4, p. 6 (right), p. 14 (top left) Benjamin Ealovega, p. 2 Tristan Cook p. 3 (top left column) Kaupo Kikkas, Titilayo Ayangade, KT Kim, Benjamin Ealovega; (top right column) Davide Ceratini, Lisa Marie Mazzucco, Shervin Lainez; (bottom) Grace Liu Anderson p. 5, p. 12 (bottom), p. 13 (left), p. 25, p. 34 Rob Davidson p. 6 (left) KT Kim p. 7 (left) Manuel Braun; (right) Titilayo Ayangade p. 8 (top) p. 15, p. 21: Grace Liu Anderson; (bottom) Kaupo Kikkas p. 10 (left) Max Heiliger; (right) Lauren Desberg p. 11 (top) Jessica Schaefer p. 12 (top) unknown p. 13 (right) Davide Cerati p. 14 (top), p. 32 Fred Stucker; (left column) Benjamin Ealovega, unknown, unknown; (right column) unknown, Hunter Hart p. 16 Lisa Marie Mazzucco p. 17 (top left) Titilayo Ayangade; (top right) Manuel Braun p. 22 Augustman p. 23 unknown p. 24 (clockwise from top) Benjamin Ealovega; Lisa Marie Mazzucco; Jeremy Mitchell; Benjamin Ealovega; Shervin Lainez

Brochure Graphic Design and Art Direction: Raquel Bonassisa; Sametz Blackstone Associates, Inc.



Made possible by funds from the New Jersey State Council on the Arts, a Partner Agency of the National Endowment for the Arts.



NEW JERSEY SYMPHONY

XIAN ZHANG MUSIC DIRECTOR

60 Park Place, Suite 900, Newark, NJ 07102

- **Receive 20% savings** for most sections
- **Get the best seats** in the house
- Free and easy **exchanges**
- Money-back **guarantee**

Subscribe today!
njsymphony.org/subscribe
1.800.ALLEGRO (255.3476)

CELEBRATING
MUSIC DIRECTOR
XIAN ZHANG'S
10TH SEASON!



XIAN
ZHANG

Non-Profit Org.
U.S. Postage
PAID
New Brunswick, N.J. 08901
Permit No. 1